



*Live*

at the GROVE ARCADE

*Luxury Apartments for Lease in the Historic Grove Arcade*

**LIFESTYLE**

Fully restored in 2002, the Grove Arcade offers extraordinary residential opportunities on its top three floors with 42 one-, two- and three-bedroom luxury apartments. The city's most historic setting provides unparalleled location and architectural charm to its apartment homes.

**SERVICE**

As the centerpiece of downtown living in Asheville, you'll find unrivaled services at the Grove Arcade. From watering plants and walking dogs, to 24-hour security and reserved parking, we offer quality, value, and satisfaction to our residents.

**COMMUNITY**

Stylish retail, entertainment, restaurants and shopping venues create a scene of most inviting appeal. Our apartments reflect the design, finish, and warmth of one of Asheville's most treasured neighborhoods. Come see why!



**FOR MORE INFORMATION, PLEASE CONTACT:**

Amber Ammons, Property Manager

Office: (828) 252-7799 ext.305 • Email: [GroveArcadeManager@charter.net](mailto:GroveArcadeManager@charter.net)

COMMERCIAL / INVESTMENT REAL ESTATE SERVICES

# GROVE ARCADE BUILDING

One Page Avenue, Suite 270

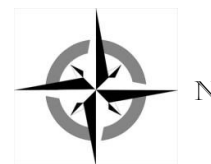
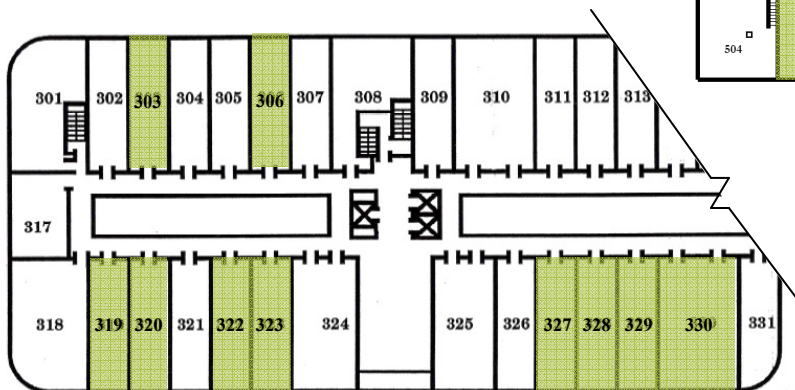
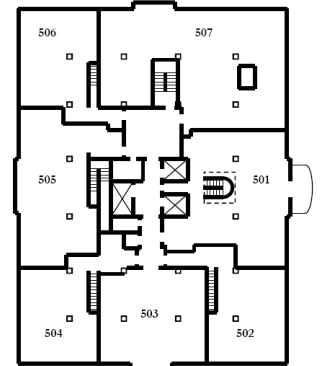
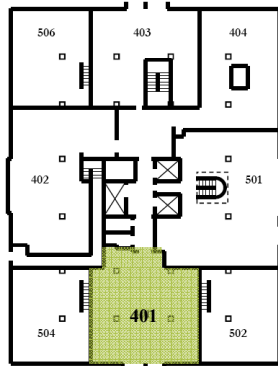
Asheville, NC 28801

Phone: (828) 252-7799 • Fax: (828) 225-3191

Current as of January 13, 2009 • 12-Month Leases Available

UNIT #	# BR	APPROX. SQ. FT.	RENT	SECURITY DEPOSIT	PARKING SPACES	AVAILABLE
303	2	1,423	\$1,850	\$1,700	2	February
306	1	983	\$1,310	\$1,235	1	February
319	1	960	\$1,315	\$1,240	1	Now
320	2	1,344	\$1,845	\$1,695	2	Now
322	2	1,351	\$1,770	\$1,620	2	TBD
323	2	1,416	\$1,850	\$1,700	2	Now
327	1	973	\$1,330	\$1,255	1	Now
328	2	1,439	\$1,860	\$1,710	2	Now
329	2	1,368	\$1,790	\$1,640	2	Now
330	2	2,092	\$2,740	\$2,590	2	Now
401	2	1,552	\$2,125	\$1,975	2	Now

Rent Includes —  
 Basic Cable Television (Charter),  
 Water & Sewer, Washer & Dryer,  
 Parking



**TO SCHEDULE AN APPOINTMENT, PLEASE CALL:**

**Amber Ammons, Property Manager**

TESSIER ASSOCIATES

82 Patton Avenue, Suite 700 • Asheville, NC 28801

Office: (828) 252-7799 ext.305 • Email: [GroveArcadeManager@charter.net](mailto:GroveArcadeManager@charter.net)